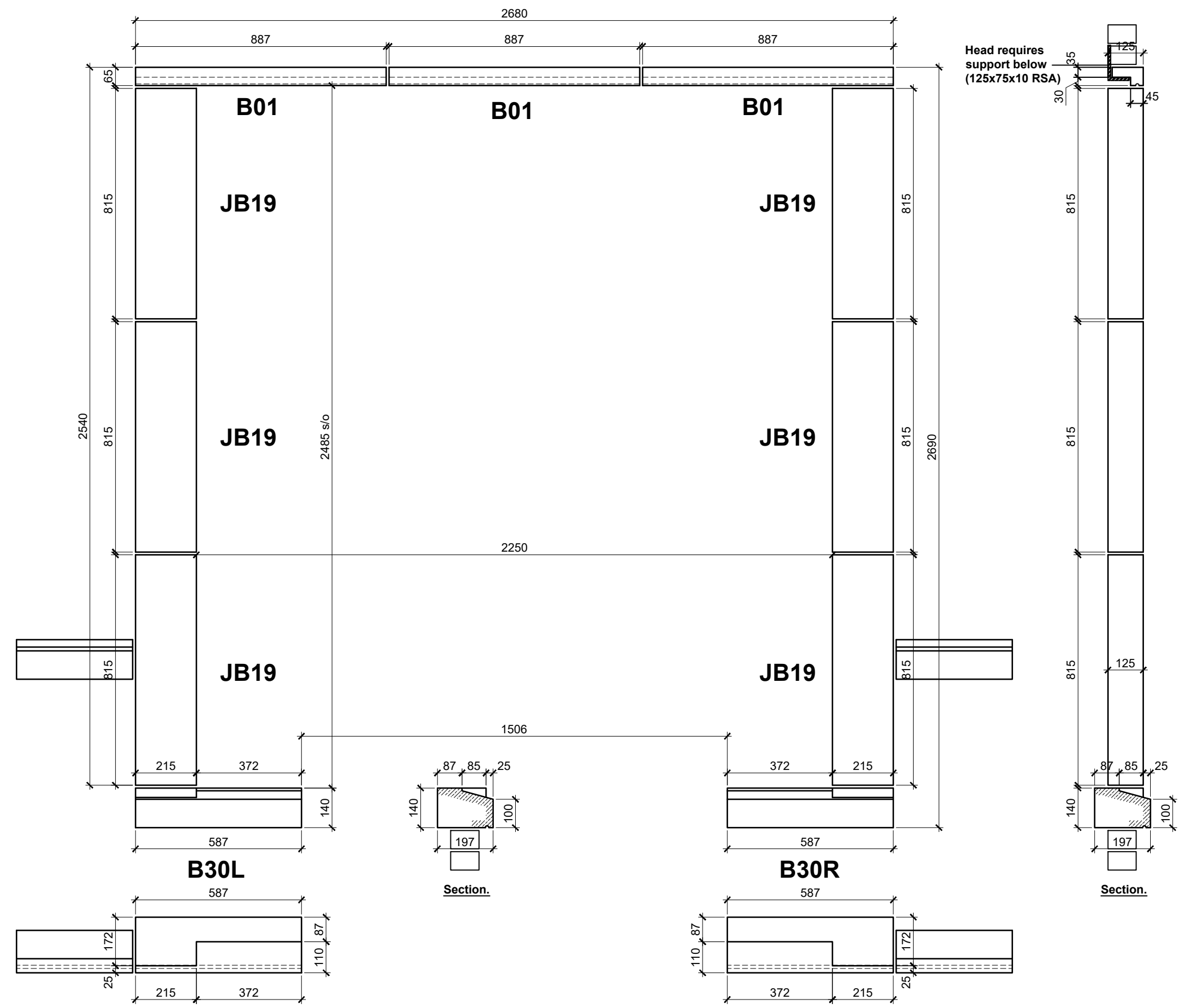


# Window Surround G.A. (Entrance - EDG01)

**Notes**  
 1. All stone cast to BS1217: 2008 and the UKCSA Specification For Cast Stone.  
 2. Minimum 35MPa compressive strength (when tested to BS1881: part 116).  
 3. All details shown on this drawing are copyright protected and must not be copied or conveyed to any third party without express written consent.  
 4. Lifting inserts and other fixings only included where specified.



**Plan View**  
Unit Ref: B30LT25068 (34kg)

**Plan View**  
Unit Ref: B30RT25068 (34kg)

Rev	Date	Comments
A	15-06-21	Redrawn to amended sizes.
B	29-07-21	Rebate & drip added to head detail.

Tel : 01302 729277  
 Fax : 01302 729288  
 www.penninestone.co.uk

## PENNINE

### STONE LIMITED

A HADDONSTONE Group Company

Site Details  
**THAMES & NEWCASTLE LTD.**  
 16 Roehampton Gate, London.

Drg Title  
**Entrance Window Surround.**  
 Product: TecCast.

Date: 27/05/21	Drg No.
Scale: NTS	25068-11
Drawn By: M. Brakewell	Rev. B