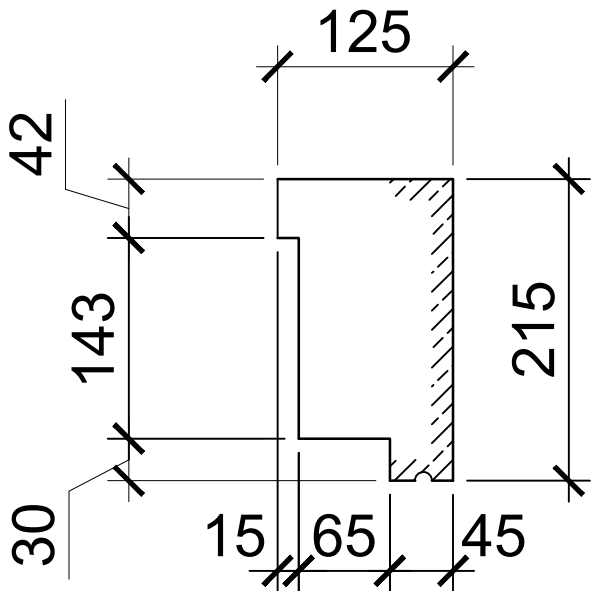
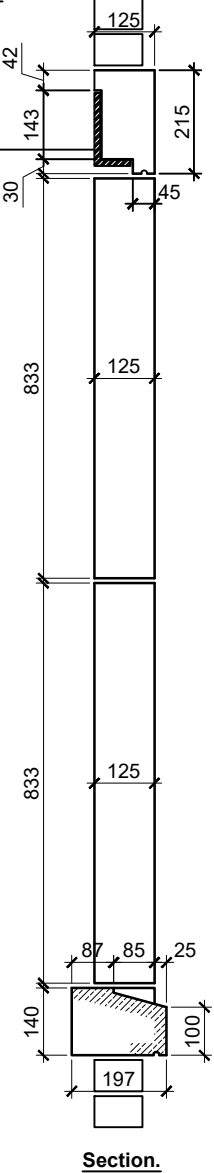


Window Surround G.A.
(WF08, WF09)

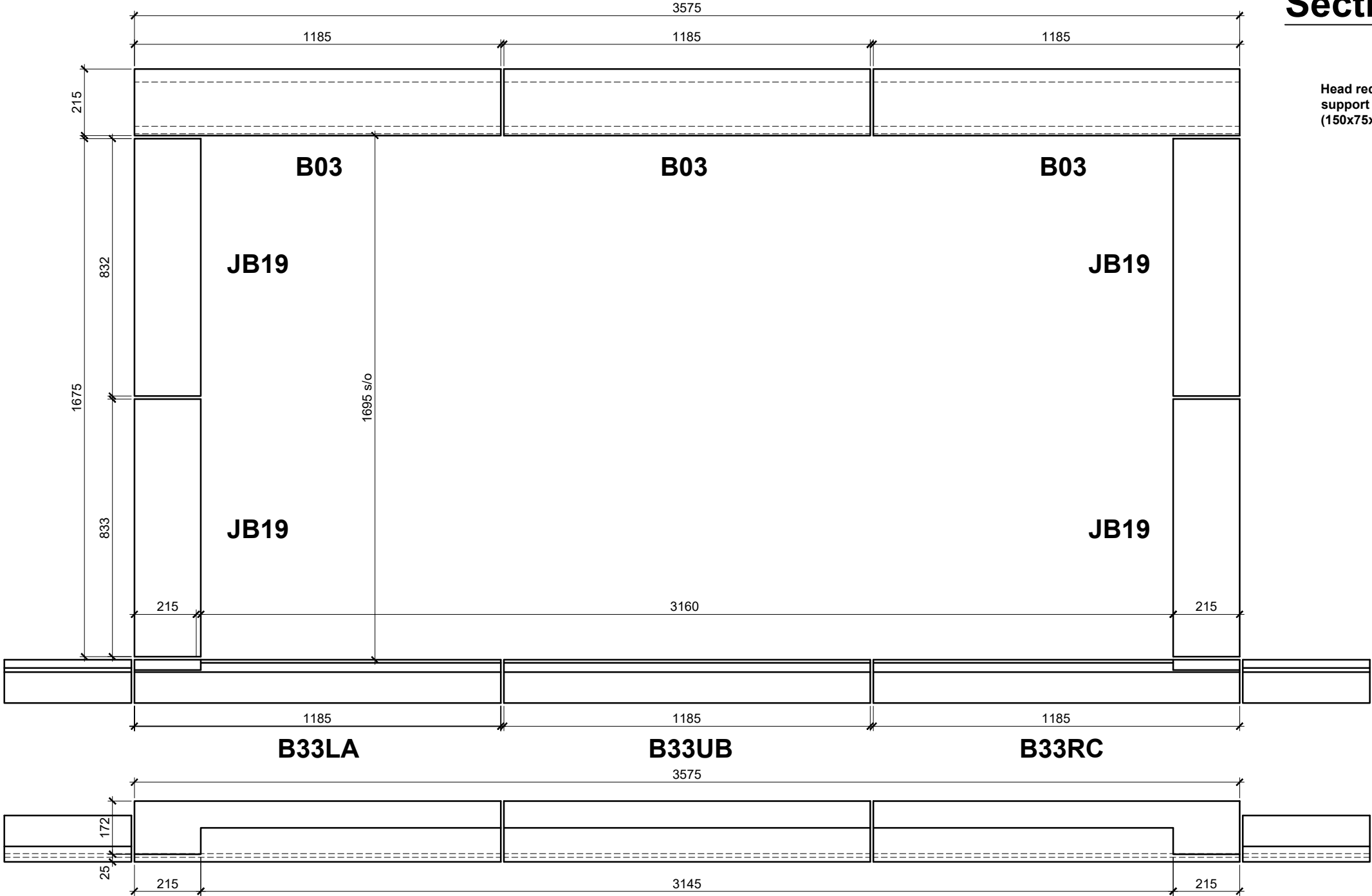


Section.

Head requires
support below
(150x75x12 RSA)



Section.



Plan View
Unit Ref: B33LT25068A (55kg)

Plan View
Unit Ref: B33UT25068B (55kg)

Plan View
Unit Ref: B33RT25068C (55kg)

- Notes
1. All stone cast to BS1217: 2008 and the UKCSA Specification For Cast Stone.
 2. Minimum 35MPa compressive strength (when tested to BS1881: part 116).
 3. All details shown on this drawing are copyright protected and must not be copied or conveyed to any third party without express written consent.
 4. Lifting inserts and other fixings only included where specified.

Rev	Date	Comments
A	15-06-21	Opening height reduced, rebate added to head detail.
B	20-07-21	Rebate amended & drip added.
C	28-07-21	Overall sizes amended.

Tel : 01302 729277

Fax : 01302 729288

www.penninestone.co.uk

PENNINE

STONE LIMITED

A HADDONSTONE Group Company

Site Details		
THAMES & NEWCASTLE LTD.		
16 Roehampton Gate, London.		
Drg Title		
Bespoke Window Surround.		
Product: TecCast.		
Date:	27/05/21	Drg No.
Scale:	NTS	25068-16
Drawn By:	M. Brakewell	Rev. C